

# HEAVY DUTY.



**AXN** | HEAVY DUTY

IT'S IN THE NAME.  
IT'S IN THE PRODUCT.

## LANDING GEAR

### KEY FEATURES

#### ✓ **Versatile Mounting**

The Pro50 and Pro60 use an 8-hole and 10-hole mounting flange, respectively.

#### ✓ **Light Weight**

The AXN Pro Series is lean and mean. At under 187 lbs. for Pro50 and 206 lbs. for Pro60, form and function still goes hand in hand with quality.

#### ✓ **Low Maintenance**

The AXN Pro Series gearbox comes standard with specially formulated grease and our grease containment system extends maintenance intervals.

#### ✓ **Robust Gusset and Housing**

AXN brings you a unique and strong gusset in combination with a robust, formed axle tee housing. Support where you need it, when you need it!

#### ✓ **Super Heavy-Duty Sandshoes**

Redefines "Solid Durability".

#### ✓ **High-Strength Gearing**

Made of forged steel gearing, the Pro Series has a balanced combination of speed and power.

▶ **High Ratio:** 3.3 turns/inch of travel

▶ **Low Ratio:** 25.4 turns/inch of travel

#### ✓ **Capacities**

##### ▶ **Lifting Capacity:**

Pro50..... 50,000 lbs.

Pro60..... 60,000 lbs.

##### ▶ **Static Load Capacity:**

Pro50..... 160,000 lbs.

Pro60..... 210,000 lbs.

#### ✓ **Premium Corrosion Protection\***

The AXN Pro Series come standard with a superior E-coating for outstanding corrosion protection.

*\* Footwear options are also separately available galvanized.*

#### ✓ **Warranty**

AXN Pro Series landing gear are backed with an industry-competitive warranty.



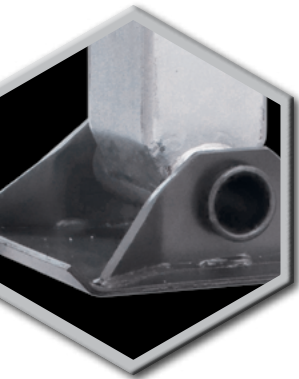
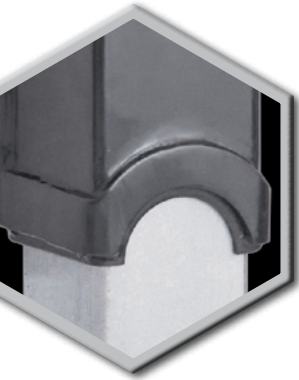
**PRO50**  
model shown.



**PRO60**  
model shown.

# LANDING GEAR

## PRO SERIES SPECIFICATIONS



FEATURE	BENEFIT	THE AXN ADVANTAGE
Weight	At 187 lbs for the Pro50, and 206 lbs for the Pro60, they are among the lightest products in the industry.	▶ Allows you to haul more freight without sacrificing durability.
Coating	Premium E-Coating	▶ Superior resistance to corrosion, especially in harsh environments where anti-icing chemicals are used on the roadway.
Lubrication and Sealing	Standard with grease tube and premium moly-based grease. Radial lip seals at all shaft locations.	▶ Grease tube keeps grease where it needs to be, extending lube intervals. ▶ Premium moly-based grease maximizes efficiency for easier cranking and ensuring operation in extreme conditions. ▶ Seals provide superior sealing capability against road and spray contaminants that degrade performance and lead to repairs.
Gearing	Forged steel gearing	▶ Strongest available – provides increased strength and unrivaled resistance to wear versus cast versions.
Leg and Housing	Precision fit between leg and housing with reinforcing band	▶ Increased strength and durability without a weight penalty. ▶ Higher resistance to side loading.
Specifications	Full line of options for travel, shoes, mounting and handles	▶ Able to meet your specific requirements .
Availability	In-stock availability	▶ Product “where and when” you need it.
Durability	Meets or exceeds TTMA/AAR requirements	▶ Certified performance for “peace-of-mind”.
Warranty	5 years parts and labor	▶ Competitive warranty backed by a responsive team.

**LIMITED WARRANTY**  
 5 year P/L competitive warranty.\*  
 \* Applies to original owner based on adherence to recommended operation and maintenance procedures.

**CERTIFICATION**  
 All models meet or exceed AAR (M-931) TTMA RP-4 specifications.

AXN LANDING GEAR NOMENCLATURE						
Product	Lift Capacity (lbs)	Mounting Pattern	Foot Options	Crank Type	Travel (in.)	Variant
TLG Landing Gear	50 50,000 (160,000 Static Load)	C 10-Hole Outside Mount	LP Low Profile	AV 12" Vertical Fold	14 14.0"	1001 59.75" Connecting Shaft
		D 8-Hole Outside Mount	UN Universal	AH 12" Horizontal Fold	17 17.0"	1002 77.5" Connecting Shaft
	60 60,000 (210,000 Static Load)	E 8-Hole Inside Mount	CU Cushion	BV 18" Vertical Fold	19 19.0"	
		T 10-Hole Inside Mount	Additional foot options available	BH 18" Horizontal Fold		
				DV 8" Vertical Fold		
				DH 8" Horizontal Fold		



**✓ CONTAINER-LOAD\* PRICING, DIRECT!**

\* FULL or MIXED Container Load of Landing Gear (160-170 Sets depending on mix).

**SPECIAL PRICING FOR FULL OR MIXED CONTAINERS**

▶ Contact your AXN Sales Manager to learn about pricing and availability!

5534 National Turnpike  
 Louisville, KY 40214 • USA  
 502.749.3200  
[www.AXNHeavyDuty.com](http://www.AXNHeavyDuty.com)